



# *One Semi-Automated Force (SAF) Testbed Baseline (OTB) Status Update*

August 2004



# Outline

- **FY 04 Focus Areas**
- **Demonstration of Objective Force (OF) OTB v2.0**



# OTB FY04 Focus Areas

- **Creation of a unified OTB baseline called Objective Force (OF) OTB v2.0 that includes:**
  - **OTB v2.0**
  - **Latest Modeling Architecture for Technology Research and EXperimentation (MATREX) software**
  - **OTB enhancements from the Unit of Action Battle Lab (UAMBL) at Ft. Knox**
  - **Better support for modeling of urban environments**
    - **Databases with large numbers of buildings (hundreds of thousands)**
    - **Route planning for Individual Combatants**
    - **Improved environment caching algorithms to support larger databases**
  - **Logistics enhancements to support fuel and ammo re-supply**
  - **Stability has been greatly enhanced**
  - **Problem Trouble Report corrections from OTB v2.0**



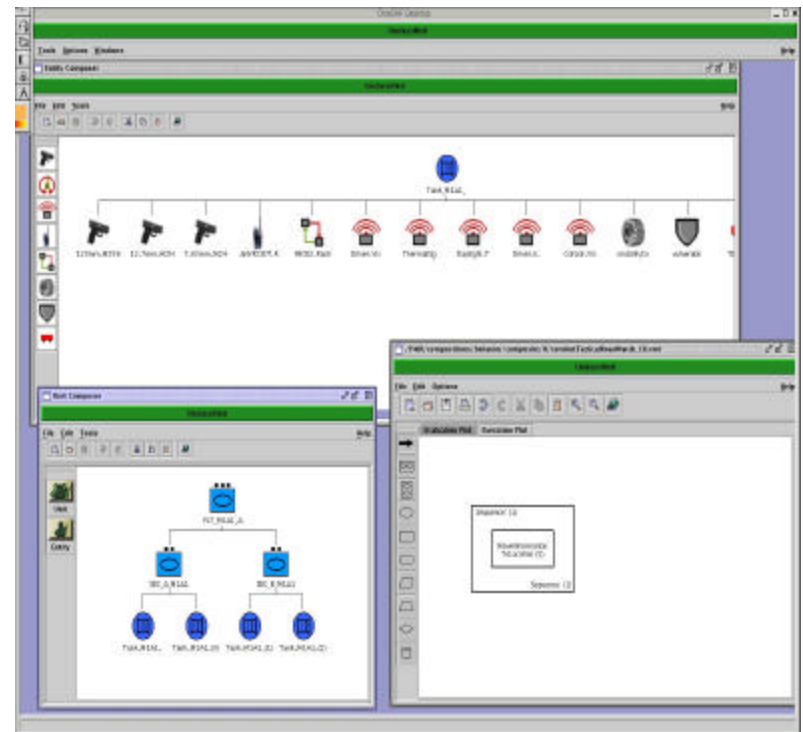
## OTB FY04 Focus Areas (cont.)

- **Creation of the international versions of OTB v2.0 (FMS/ABCA)**
  - Both are now available
- **Creating a patch for OTB v2.0 that includes many of the fixes and stability enhancements that have been done in OF OTB v2.0**
- **Military Scenario Development Language (MSDL) splitter tool**
  - Removes current limitation of the MSDE tool (OTB version) that assumes the scenario will be run on a single OTB machine
  - Allows a user to specify which OTB systems will simulate various assets



# OTB FY04 Focus Areas (cont.)

- **OOS Tools Integration**
  - Integrate the OOS entity and unit composers into OTB and incorporate all entities/units OTB currently supports as well as the new FCS systems
  - Work done will be done so that it can be reused in OOS



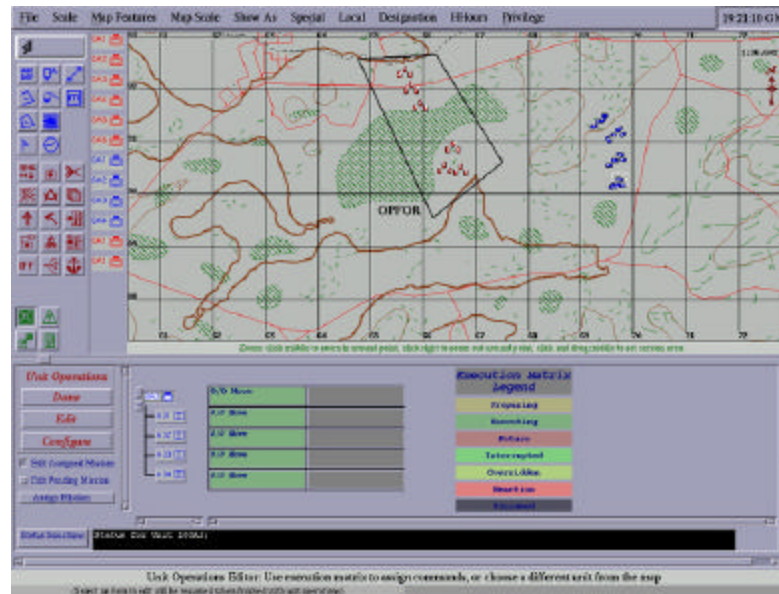


## **Demonstration of OF OTB v2.0**



# OneSAF Testbed Baseline Applications

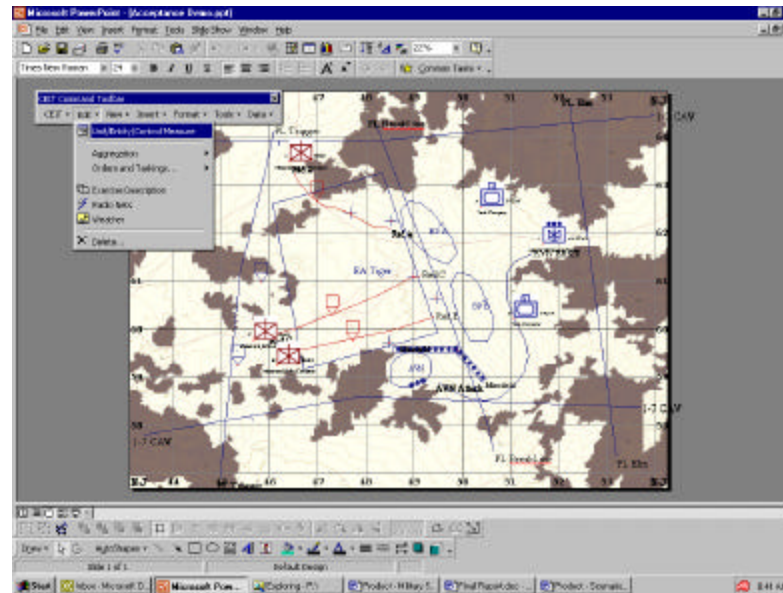
- **OTB**
  - Provides Semi-Automated Forces Stations (SAFstations) and Semi-Automated Forces Simulation (SAFsim) capabilities at a single workstation.





# OneSAF Testbed Baseline Applications (cont)

- **Military Scenario Development Environment (MSDE)**
  - Microsoft Powerpoint based application exercise planning tool



# OneSAF Testbed Baseline Applications (cont)

- **Powerstripes**
  - Windows based after action review (AAR) system



# OneSAF Testbed Baseline Applications (cont)

- *PC based Stealth*
  - *Three dimensional visualization systems are available to work with OTB, these are not provided with OTB 2.0 as GOTS*

